

# HermanMiller

## Fuld Nesting Chair



## Reimagining a seating mainstay



### **Fuld Nesting Chair**

Our first horizontal stacking chair, Fuld has a crisp design that both reimagines and sets a new reference point for seating that stacks together when not in use, saving on space. Designed by Stefan Diez, Fuld eschews the typical X shape for a sleek inverted Y with tubular arms. The back has a touch of elasticity, which keeps you comfortable as you shift. With Fuld, the modest horizontal stacking chair gets the respect it deserves.





Paired with other agile products like OE1 Workspace Collection, Fuld allows you to easily reconfigure your space to meet the evolving needs of your team.

## Elevates the aesthetic

With its refreshing aesthetic, Fuld is a standout among horizontal stacking chairs and enables you to reconfigure space for different uses, such as breakout sessions and educational events, without sacrificing style. Designed for practicality, it features flip-up seats and wall-saver legs that prevent the chairback from scraping against walls. Fuld's unique lines and monochromatic or multicoloured look enliven any space, even when stored in the open, proving that functional can be feisty.

## Factors in comfort

Fuld's contoured seat pocket and a back with a welcome bit of flex provide a surprising degree of comfort. An optional 3D Knit textile, available in a variety of colours, adds visual warmth.



Fuld's seats effortlessly flip up for easy, limitless stacking.







## Considers sustainability

A long-standing commitment to the environment drove Diez's design of Fuld. Its pioneering one-piece construction and tubular arms result in less waste in the production process. The chair comprises just two materials for easy recycling at the end of its lifecycle. In addition, the 3D Knit textile is made from 50 per cent post-consumer recycled content, and because it's knitted to the chair's exact dimensions, there's no fabric waste.



Fuld is available in both glides and castors.



An optional 3D Knit textile, Tuck, is available in a range of colours to add extra flair.



Stefan Diez

## Design

Designer Stefan Diez sees Fuld as "a comfortable, compact version of an office chair that is 'stackable', in a way." During the design research phase, he appreciated the role horizontal stacking chairs play in making a space universal. Fuld is the result of his belief that a horizontal stacking chair can be visually interesting, as well as functional.

## About Stefan Diez

Since founding his Munich-based studio, Diez Office, in 2002, Stefan Diez has been at the forefront of transforming the ways in which contemporary products are developed and manufactured, bringing together technical expertise, creative experimentation and a rigorous commitment to sustainability.

His 10 Circular Design Guidelines, a set of principles that outline how commercially successful products can be both environmentally and socially responsible, demonstrates how design can enable meaningful change across industry and society.



# Materials

## Fuld Nesting Chairs

### Shell & Frame Finish Leg Finish



Alpine ZM  
Satin Aluminium SNA



Carbon CRB  
Satin Carbon SNC



Nightfall DN2  
Nightfall DN2



Olive OLF  
Olive OLF

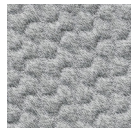


Cocoa CC1  
Satin Bronze SNB

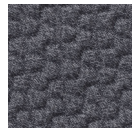


Black BK  
Black BK

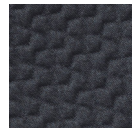
### 3D Knit Seat Splash Price Category 1



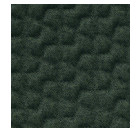
Alpine  
9NK01



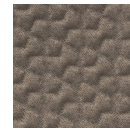
Carbon  
9NK02



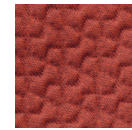
Nightfall  
9NK03



Olive  
9NK04



Cocoa  
9NK05



Canyon  
9NK06

**Maximum User Weight**

350 lbs / 158.75 kg

**Seat Height**

17.52" / 445 mm

**Seat Depth**

17.78" / 451.61 mm

**Stacked Length Between Backrests**

5.91" / 150.3 mm

**Total Stacked Chair Length, 6 chairs**

50.49" / 1282.52 mm

**Total Stacked Chair Length, 5 chairs**

44.57" / 1132.22 mm

**Total Stacked Chair Length, 4 chairs**

38.66" / 981.92 mm

**Total Stacked Chair Length, 3 chairs**

32.74" / 831.62 mm

**Total Stacked Chair Length, 2 chairs**

26.04" / 661.32 mm

**Back Support**

Backrest provides flex

**Arm Options**

Fixed Arms

**Certifications/Environmental Highlights**

SCS Indoor Advantage Gold  
Contributes to LEED and WELL Building Standards  
Living Building Challenge Red List Compliant

For more information, please visit [hermanmiller.com](https://www.hermanmiller.com).

Herman Miller and  are among the trademarks or registered trademarks of MillerKnoll, Inc.

Please recycle. © 2023 MillerKnoll, Inc.

