

HermanMiller  
Setu®



Instant comfort  
for anyone, anywhere



**Setu**  
Designed by Studio 7.5

The function and contours of Setu were shaped by the world around us. The designers of Studio 7.5 observed the ways technology has changed how we work, where we work, and how we move throughout the day. We're working more collaboratively, in a variety of settings—but spending less time in each spot. We expect to be able to work anywhere and everywhere, and we need furniture that can do the same.

While technology has changed much about the nature of work, it hasn't changed how we all like to work: in comfort. The Setu family includes multipurpose chairs, stools, lounge chairs, and ottomans, designed to deliver instant comfort from the moment you sit down. A complementary suite of tables supports collaboration in three distinct working postures.



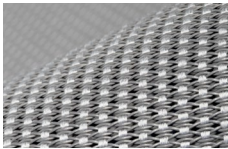




Performance

Material innovation gives Setu Chairs their unique combination of flex and strength. The Kinematic Spine™ uses two types of polypropylene to control resistance as you recline and to support your weight, without a tilt mechanism. It bends and flexes with every movement, responding to the natural ways your body moves.

More structural element than textile, the finely tuned Lyris 2™ elastomeric material creates Setu’s one-piece seat and back. Lyris 2 works with Setu’s Kinematic Spine to distribute your weight evenly and conform to your contours. The open weave also aerates your body to keep you comfortable. On upholstered Setu Chairs, the C-Layer suspension works with a variety of textiles, adding a degree of structural support to the fabric.



The pliable Lyris 2 seat and back suspension adapts to your sitting bones, providing contouring comfort as well as aeration.



The versatility of the Kinematic Spine extends the Setu concept to support a variety of postures. With the Setu Lounge Chair, you can choose your ideal reclining position without making a single adjustment.

The Setu Multipurpose Chair has a height adjustment, and that’s it. There’s nothing to tinker with, nothing to tweak, nothing to think about.





Setu Tables are available in four heights, three diameters, and a variety of surface materials to support all the ways you like to work: sitting, lounging, or standing.

## Design

Setu is Studio 7.5’s solution for today’s more collaborative, less formal workspaces. From the graceful curve of its ribbon arms to the durable, uncoated H-Alloy™ base, every part of the Setu Chair was painstakingly shaped and reshaped to ensure that each molecule falls into the right place to deliver the desired functionality. The result is an environmentally sensitive design that uses less material—only 17 pounds for the multipurpose chair—to support people of all sizes, up to 300 pounds (136 kg). A range of upholstery and material options means you can outfit Setu to serve as a focal point or to blend into any space where you work or live.

## About Studio 7.5

Designers Claudia Plikat, Burkhard Schmitz, and Carola Zwick and engineer Roland Zwick founded Berlin, Germany—based industrial design firm Studio 7.5 in 1992. Their designs for Herman Miller, including Setu Chairs, Mirra® and Mirra 2 Chairs, and Metaform Portfolio™, reflect a desire to give people more control over their work environments and tools.



Claudia Plikat, Burkhard Schmitz, Carola Zwick, and Roland Zwick

# Materials

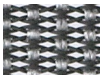
Setu’s materials complement its innovative performance. Choose the conforming comfort of a Lyris 2 suspension seat and back, or opt for traditional upholstery without sacrificing support, thanks to the C-Layer suspension. The materials below reflect only a portion of the textiles available. Visit [hermanmiller.com/materials](https://hermanmiller.com/materials) to see our complete textile and materials offering.

## Setu Chairs

### Seat & Back Lyris 2



Price Category 1  
Alpine  
4W21



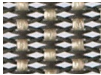
Price Category 1  
Slate Grey  
4W26



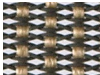
Price Category 1  
Java  
4W30



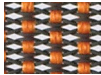
Price Category 1  
Graphite  
4W31



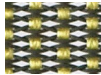
Price Category 1  
Chino  
4W28



Price Category 1  
Rattan  
4W29



Price Category 1  
Mango  
4W22



Price Category 1  
Chartreuse  
4W23



Price Category 1  
Berry Blue  
4W25

### Upholstered Seat & Back Noble



Price Category 5  
Blue Grey Mix  
22N12



Price Category 5  
Heathered Grey  
22H16



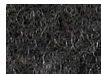
Price Category 5  
Tan Mix  
22M13



Price Category 5  
Bucksuede  
22N01



Price Category 5  
Heathered Brown  
22H14



Price Category 5  
Heathered Black  
22H15



Price Category 5  
Heathered Twilight  
22H17



Price Category 5  
Cadet  
22N07



Price Category 5  
Chipotle  
22N02



Price Category 5  
Cherry  
22N04



Price Category 5  
Bordeaux  
22N05



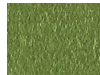
Price Category 5  
Magenta  
22N03



Price Category 5  
Boysenberry  
22N06



Price Category 5  
Kiwi Green  
22H10



Price Category 5  
Pesto  
22N11



Price Category 5  
Peacock  
22N09



Price Category 5  
Berry Blue  
22N08

### Frame Finish



Studio White  
98



Chino  
JH



Slate Grey  
SG



Java  
SB

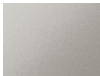


Graphite  
G1

### Base Finish



Semi-Polished  
5Y



H-Alloy  
L7



Graphite  
G1

## Setu Tables

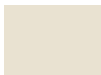
### Top Solid Laminate



Studio White  
98



White  
91



Soft White  
LU



Sandstone  
WL



Folkstone Grey  
8Q

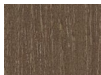
### Wood & Veneer



Clear on Ash  
ET



Oak on Ash  
EU



Walnut on Ash  
EV



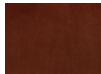
Natural Maple  
UL



Aged Cherry  
ED



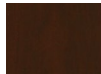
Light Brown Walnut  
2U



Walnut on Cherry  
UX



Medium Red Walnut  
EK

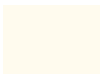


Dark Brown Walnut  
40

### Column Finish



Studio White  
98



White  
91



Graphite  
G1



Black  
BK

### Base Finish



Semi-Polished  
5Y



H-Alloy  
L7



Graphite  
G1

Setu Chairs

<b>Family</b> Multipurpose Chair Stool Lounge Chair Ottoman		<b>Seat Depth</b> Fixed Seat	15"
<b>Overview</b> Maximum User Weight		<b>Arm Options</b> No Arms Fixed Arms	
<b>Seat/Back Material</b> Lyris 2 Suspension Suspended Upholstery		<b>Base Options</b> 5-Star Base with Casters (Standard- or High-Height) 4-Star Base with Glides (Fixed-Height only)	
<b>Seat Height</b> Standard-Height Range High-Height Range Fixed-Height Range		<b>Environmental Highlights</b> Recyclability BIFMA level® GREENGUARD® Cradle to Cradle® Global GreenTag® Green Rate	Up to 96% 3 Gold Silver Level A
The following information applies only to Setu Multipurpose Chairs.			
300 lbs/136 kg			
Optional Optional			
15½"–20" 17"–21½" 18½"			

Setu Tables

<b>Family</b> Coffee Table Lounge Table Work Table Standing Table		<b>Diameter</b> Coffee Table Lounge Table Work Table Standing Table	30" or 36" 30" or 36" 30", 36", or 42" 30" or 36"
<b>Height</b> Coffee Table Lounge Table Work Table Standing Table		<b>Surface Material Options</b> Solid Laminate Wood & Veneer	
16" 22" 29" 42"		<b>Environmental Highlights</b> Recyclability Cradle to Cradle	Up to 65% Silver (Veneer only)

For more information, please visit [hermanmiller.com/asia](http://hermanmiller.com/asia)

® level is a registered trademark of BIFMA International.  
® GREENGUARD is a registered trademark of the GREENGUARD Environmental Institute.  
® Cradle to Cradle is a registered trademark of McDonough Braungart Design Chemistry.  
® Global GreenTag is a registered trademark of Global Green Tag Pty Ltd.

Printed in the USA. Please recycle.  
© 2014 Herman Miller, Inc., Zeeland, Michigan O.CQ202  
All rights reserved.