

HermanMiller

Public Office Landscape™ CMF Chip Chart



# Textiles

## Era

Camira

Content : 100% Polyester Non-Metallic Dyestuffs

Width : 1400mm

Price Band : 2

Abrasion : 100,000 rubs Martindale

Flammability : BS 7176: 2007 Low Hazard  
BS EN 1021-1:2014 cigarette  
BS EN 1021-2:2014 match

Era  
Band 2



Futurist  
CAE01



Generation  
CAE02



Lifetime  
CAE03



Span  
CAE05



Cycle  
CAE06



Period  
CAE07



Everlasting  
CAE10



Chapter  
CAE08



Perennial  
CAE12



Prime  
CAE09



Forecast  
CAE11



Present  
CAE13



Forward  
CAE14



Stage  
CAE15

Textiles

Sprint

Camira

Content : 100% Polyester
Width : 1500mm
Price Band : 2
Abrasion : 100,000 Martindale cycles
Flammability : BS EN 1021-1:2014 Cigarette
BS EN 1021-2:2014 Match

Sprint
Band 2



# Textiles

## Focus

WovenImage

Content : 100% Polyester  
Width : 1400mm  
Price Band : 2  
Abrasion : 100,000+ Martindale cycles  
Flammability : AS 1530.3  
AS 3837 Rating: Group 1  
BS 5852 Cigarette & Match  
CAL 117-E

Focus  
Band 2



Ruby  
V8229



Papaya  
V8217



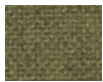
Carnation  
V8220



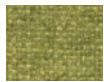
Aubergine  
V8282



Blossom  
V8258



Olive  
V8238



Lime Splice  
V8231



Citrus  
V8261



Grass  
V8234



Navy  
V8236



Marine  
V8230



Turquoise  
V8232



Aqua  
V8235



Foam  
V8262



Black  
V8254



Slate  
V8247



Charcoal  
V8250



Smoke  
V8244



Celedon  
V8243



Vanilla  
V8246



Frost  
V8210



Cream  
V8290

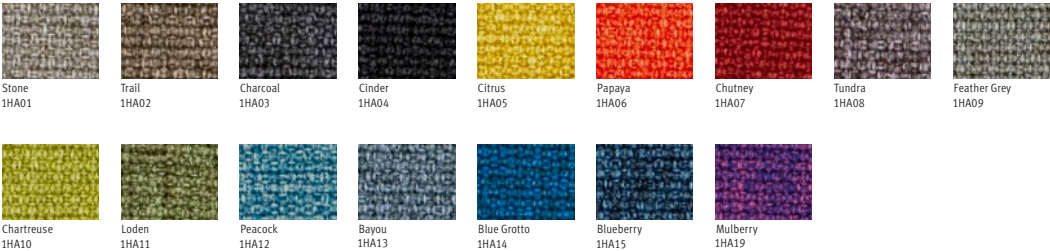
Textiles

Medley

Gabriel

Content : 100% Polyester
Width : 1400mm
Price Band : 2
Abrasion : 75,000 Martindale cycles
Flammability : BS EN 1021 1&2 Cigarette & Match
BS 5852 Part 1 0,1 Cigarette & Match
CAL TB 117-2013
ASTM E84 Pass

Medley
Band 2



# Textiles

## Flux

WovenImage

Content : 53% Cotton, 20% Linen, 20% Polyester, 7% Acrylic

Width : 1400mm

Price Band : 3

Abrasion : 50,000+ Martindale cycles

Flammability : AS1530.3

BS 5852, source 0 - 1

CAL 117

Flux  
Band 3



Black  
WIF542



Chocolate  
WIF560



Grey  
WIF545



Light Grey  
WIF444



Cream  
WIF909

# Textiles

## Global

WovenImage

Content : 100% Polyester  
Width : 1450mm  
Price Band : 3  
Abrasion : 100,000+ Martindale cycles  
Flammability : AS 1503.3  
AS 3837 Class 1  
BS EN 1021.1  
CAL 117

Global  
Band 2



Silver  
WIG101



Yellow  
WIG108



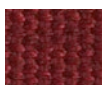
Poppy  
WIG177



Steel  
WIG210



Pink  
WIG213



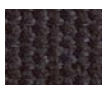
Ruby  
WIG294



Tangelo  
WIG295



Cornflower  
WIG300



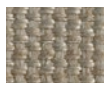
Naval  
WIG365



Apple  
WIG384



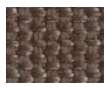
Quarry  
WIG444



Oatmeal  
WIG451



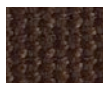
Azure  
WIG462



Truffle  
WIG476



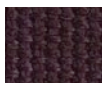
Charcoal  
WIG542



Chocolate  
WIG560



Wheat  
WIG611



Aubergine  
WIG821

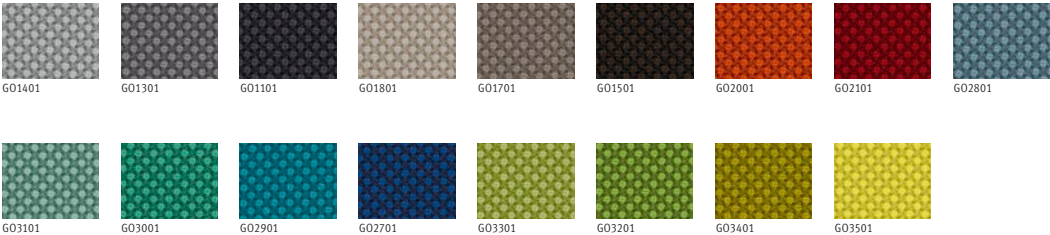
Textiles

Oberon

Gabriel

Content : 100% Post-consumer Recycled Polyester  
Width : 1400mm  
Price Band : 3  
Abrasion : 100,000 Martindale cycles  
Flammability : BS 5852 Part 1 O&1  
BS EN 1021 1&2  
CA TB 117-2013

Oberon  
Band 3





# Textiles

## Titania

Gabriel

Content : 100% Post-consumer Recycled Polyester

Width : 1400mm

Price Band : 3

Abrasion : 100,000 Martindale cycles

Flammability : BS 5852 O&1  
BS EN 1021 1&2  
CA TB 117-2013

Titania  
Band 3



GT1101



GT1401



GT1102



GT1801



GT2101



GT2401



GT2501



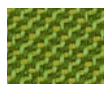
GT2701



GT2402



GT2702



GT2802



GT3001

# Textiles

## Rivet

Camira

Content : 100% Post-consumer Recycled Polyester  
Width : 1400mm  
Price Band : 3  
Abrasion : 50,000+ Martindale cycles  
Flammability : BS EN 1021-1 cigarette  
BS EN 1021-2 match

Rivet  
Band 3



Please connect with supplier for actual swatch card.

Textiles

Park

WovenImage

Content : 100% Polyester + Nanotex™, Durablock, Bioam treatments.  
Width : 1420mm  
Price Band : 4  
Abrasion : 50,000+ Martindale cycles  
Flammability : BSEN 1021.1  
AS1530.3

Park  
Band 4



# Textiles

## Play

WovenImage

Content : 70% Polyester 30% Acrylic + Nanotex™, Durablock, Bioam treatments.

Width : 1430mm

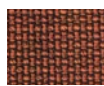
Price Band : 4

Abrasion : 51,500+ Martindale cycles

Flammability : BSEN 1021.1

AS1530.3

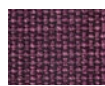
Play  
Band 4



Orange  
WP151



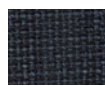
Rouge  
WP193



Pink  
WP213



Teal  
WP314



Navy  
WP365



Olive  
WP384



Mushroom  
WP454



Charcoal  
WP540



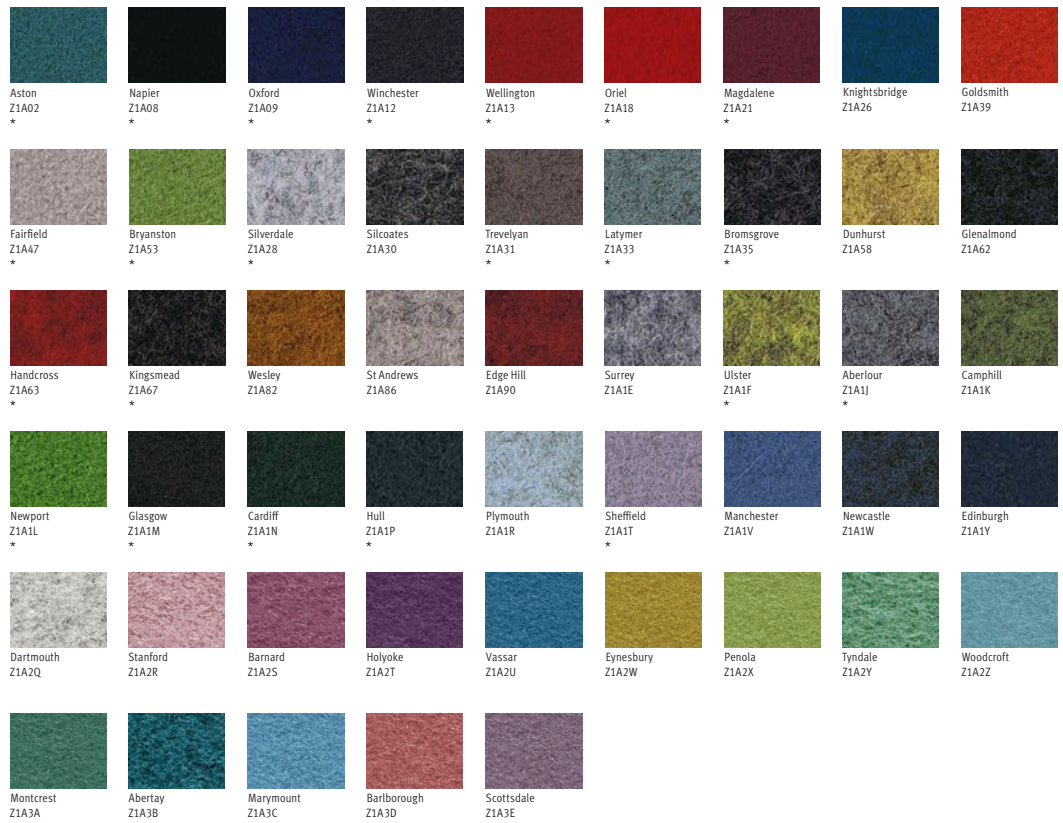
Steel  
WP545

**Blazer**

Camira

Content : 100% Virgin Wool. Non-metallic dyestuffs  
 Width : 1400mm  
 Price Band : 5  
 Abrasion : 35,000+ Martindale cycles  
 Flammability : BS EN 1021-1 cigarette  
 BS EN 1021-2 match  
 BS 7176 Low Hazard

Blazer  
Band 5



\* Please connect with supplier for actual swatch card.

Textiles

Main Line Flax

Camira

- Content : 70% Virgin Wool. 30% Flax
- Width : 1400mm
- Price Band : 5
- Abrasion : 50,000+ Martindale cycles
- Flammability : BS EN 1021-1:2014 cigarette  
BS EN 1021-2:2014 match  
BS 7176 Medium Hazard  
BS 5852 Ignition Source 5

Main Line Flax  
Band 5



# Textiles

## Synergy

Camira

Content : 95% Virgin Wool. 5% Polyamide. Non-metallic dyestuffs.

Width : 1400mm

Price Band : 5

Abrasion : 100,000+ Martindale cycles

Flammability : BS EN 1021-1:2014 cigarette

BS EN 1021-2:2014 match

BS 7176 Low Hazard

Synergy  
Band 5



Level  
56S20



Frame  
56S22



Compound  
56S25



Bridge  
56S26



Lateral  
56S28



Pair  
56S31



Chemistry  
56S35



Medley  
56S36



Linea  
56S37



Relate  
56S44



Gather  
56S46



League  
56S50



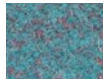
Comply  
56S52



Pact  
56S53



Support  
56S55



Kinship  
56S56



Family  
56S58



Group  
56S59



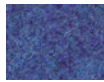
Accord  
56S60



Alike  
56S62



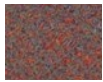
Huddle  
56S65



Collaborate  
56S68



Open  
56S71



Success  
56S76



Apt  
56S80



Similar  
56S81

Textiles

Aquarius

Camira

Content : 100% Virgin Wool. Non-metallic dyestuffs
Width : 1400mm
Price Band : 5
Abrasion : 50,000+ Martindale cycles
Flammability : BS EN 1021-1&2 Cigarette & Match
BS 7176 Low Hazard

Aquarius
Band 5



Please connect with supplier for actual swatch card.



# Textiles

## Hemp

Camira

Content : 60% Virgin Wool. 40% True Hemp. Non-metallic dyestuffs

Width : 1400mm

Price Band : 6

Abrasion : 50,000+ Martindale cycles

Flammability : BS EN 1021-1&2 Cigarette & Match

BS 5852 Ignition Source 5

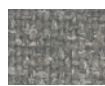
Hemp  
Band 6



Plough  
V5301



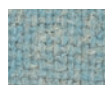
Gorse  
V5303



Arable  
V5304



Dew  
V5316



Dale  
V5318



Acre  
V5319



Trough  
V5320



Hectare  
V5321

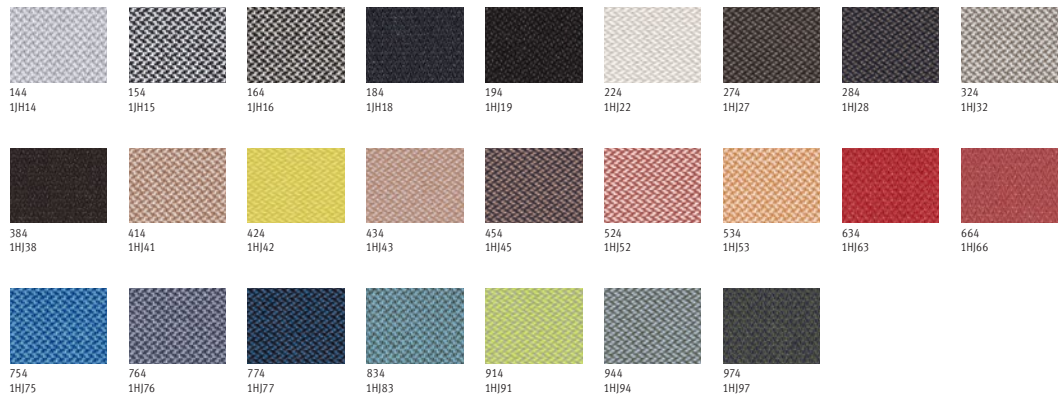
# Textiles

## Revive 1

Kvadrat

Content : 100% Recycled Polyester FR  
Width : 1400mm  
Price Band : 6  
Abrasion : 60,000 Martindale cycles  
Flammability : BS EN 1021-1/2  
CAL 117 - 2013

Revive 1  
Band 6



Please connect with supplier for actual swatch card.

# Textiles

## Revive 2

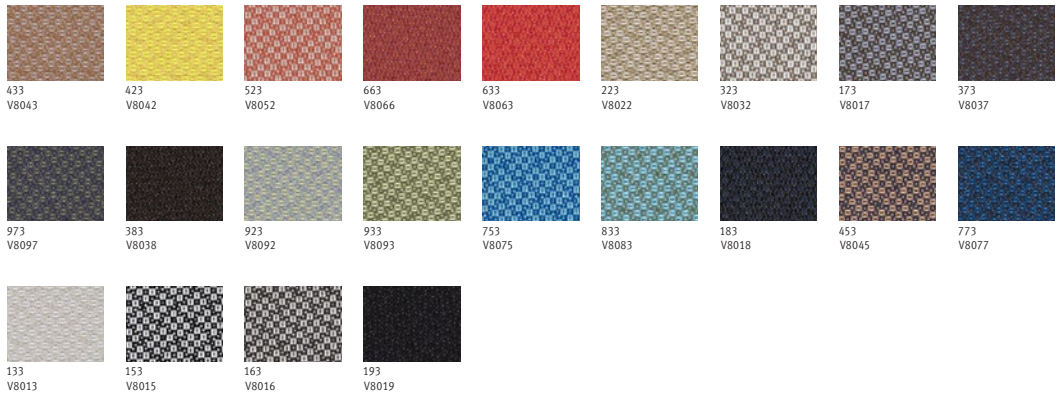
Kvadrat

### Seating

### Workspaces

Content : 100% Recycled Polyester FR  
Width : 1400mm  
Price Band : 6  
Abrasion : 45,000 Martindale cycles  
Flammability : EN 1021-1/2.  
CAL 117 - 2013

Revive 2  
Band 6



Please connect with supplier for actual swatch card.

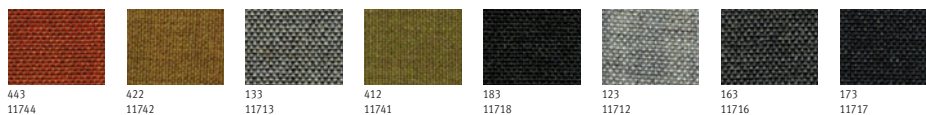
# Textiles

## Remix 2

Kvadrat

Content : 90% New Wool, 10% Nylon  
Width : 1380mm  
Price Band : 8  
Abrasion : 100,000 Martindale cycles  
Flammability : BS EN 1021-1/2  
BS 5852, Part 1  
CAL 117 - 2013

Remix 2  
Band 8



Please connect with supplier for actual swatch card.

# Textiles

## Steelcut Trio 2

Kvadrat

Content : 90% Wool, 10% Nylon  
Width : 1400mm  
Price Band : 12  
Abrasion : 100,000+ Martindale cycles  
Flammability : BS EN 1021-1/2  
BS 5852, Part 1  
CAL 117 - 2013

Steelcut Trio 2  
Band 12



Please connect with supplier for actual swatch card.

## Textiles

### Divina Melange 2

Kvadrat

Content : 100% New Wool  
Width : 1500mm  
Price Band : 13  
Abrasion : 45,000+ Martindale cycles  
Flammability : BS EN 1021-1/2  
BS 5852, Ignition Source 2-5  
CAL TB 117

Divina Melange 2  
Band 13



Please connect with supplier for actual swatch card.

## Textiles

### Hallingdal 65

Kvadrat

Content : 70% New Wool, 30% Viscose  
Width : 1300mm  
Price Band : 13  
Abrasion : 100,000+ Martindale cycles  
Flammability : BS EN 1021-1/2  
BS 5852 Ignition Source 2-5  
CAL. TB 117

Hallingdal 65  
Band 13



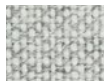
130  
Z2408



103  
Z2402




180  
Z2413



110  
Z2403

Please connect with supplier for actual swatch card.

**For more information, please visit [hermanmiller.com/asia](https://hermanmiller.com/asia)**

HermanMiller and  are registered trademarks of Herman Miller, Inc.  
Public Office Landscape is a trademark of Herman Miller, Inc.

©2019 Herman Miller Ltd, Hong Kong  
All rights reserved.