



WENDELBO

Wendelbo Fabrics & Leather

2023 CONTRACT

/ aesthetic honesty, quality and detailing







Fabrics /

Bosa	6-7
Comfort	8-9
Cuddle	10-11
Juke	12-13
North	14-15
Roco	16-17
Soft	18-19

Leather /

Barona	20-21
Patrol	22-23
Solo	24-25

Preferred Partners /

camira

Main Line Flax

Main Line Plus

Quest

Regent

Sumi

Synergy

Yoredale

Gabriel

Breeze Fusion

Capture

Connect

Crisp

Criss Cross

Cura

Cyber

Harmony

Mood

Morph

Noma

Passion

Savoy

Step Melange

Tempt

kvadrat

Canvas 2

Fiord

Hallingdal 65

Harald 3 *

Maple

Melange Nap

Parkland

Recheck

Reflect

Relate

Remix

Re-wool

Sabi

Steelcut 2

Steelcut Trio 3

Sunniva 3

Tonus 4

* Not approved for UK



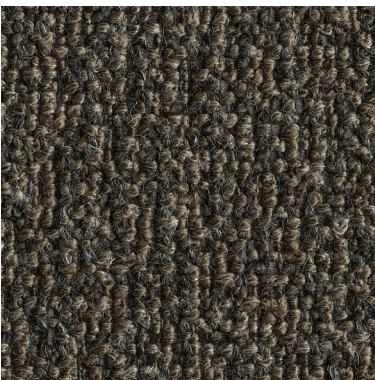
Col. 02



Col. 04



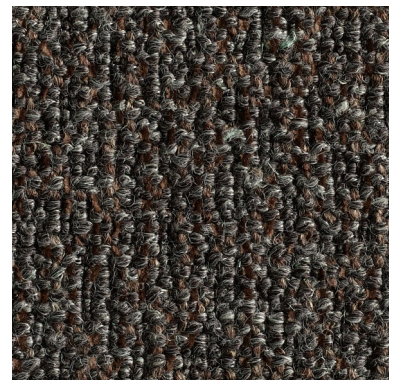
Col. 06



Col. 08








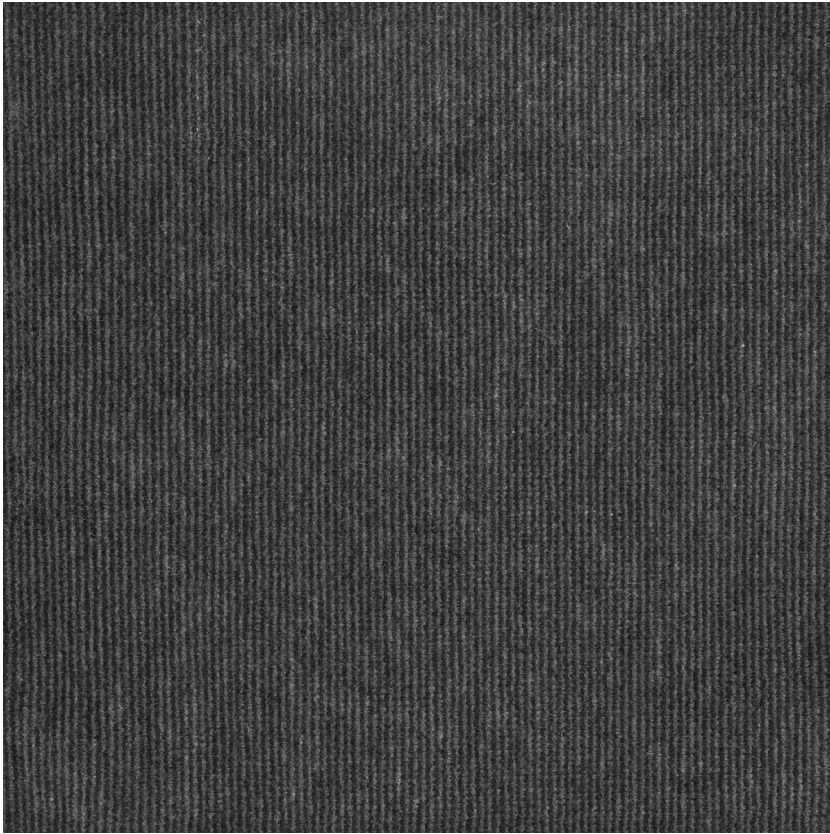
Col. 10



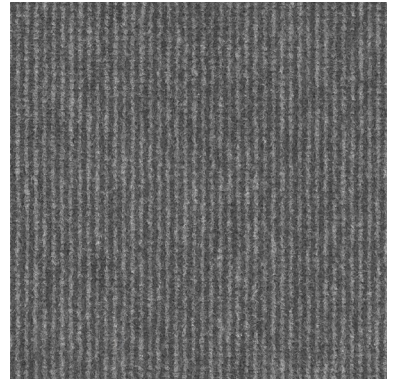
Col. 12

Bosa

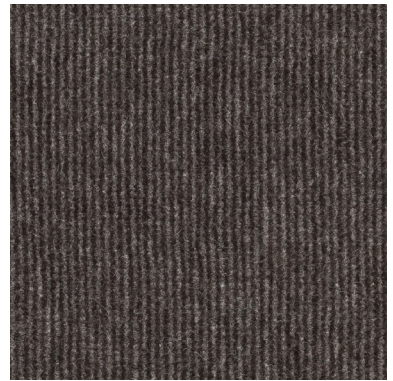
Composition	15% co./ 15% li./ 5% pa./ 40% pc./ 20% pl./ 5% vi.	
Width	140 cm -[55']	
Martindale/Abrasion	EN 12947-2	50.000
Pilling	Scale 1-5, max. 5 EN ISO 12945-2	3-4
Light Fastness	Scale 1-8, max. 8 EN ISO 105-B02	5
Flammability	BS 5852 Crib 5	Not confirmed
	BS 5852 Cigarette & match	Cigarette confirmed
Maintenance	    	
Grp.	Grp. 1-11, max. 11	4



Col. 02



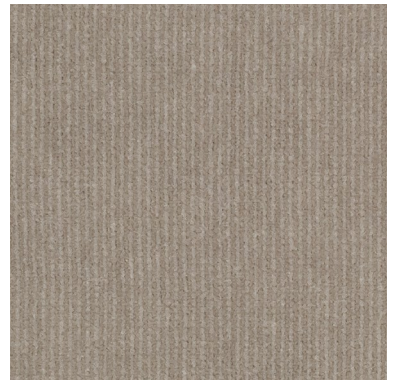
Col. 04



Col. 06



Col. 08



Col. 10








Col. 12



Col. 14

Comfort

Composition		80% pl./20% co.
Width		140 cm -[55']
Martindale/Abrasion	EN 12947-2	100.000
Pilling	Scale 1-5, max. 5 EN ISO 12945-2	5
Light Fastness	Scale 1-8, max. 8 EN ISO 105-B02	3-5
Flammability	BS 5852 Crib 5	Not confirmed
	BS 5852 Cigarette & match	Cigarette confirmed
Maintenance	    	
Price Grp.	Grp. 1-11, max. 11	4



Col. 02



Col. 04



Col. 06



Col. 08



Col. 10



Col. 12



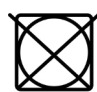




Col. 14



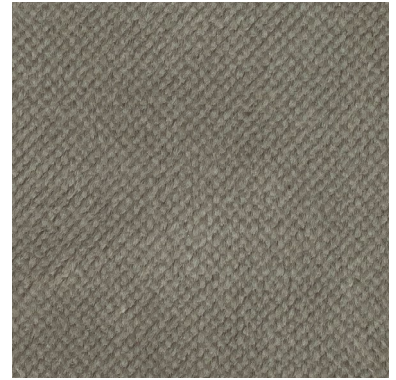
Col. 16

Cuddle

Composition	34% vi./33% pc./17% wo./8% pl./4% li./4% co.	
Width	140 cm -[55']	
Martindale/Abrasion	EN 12947-2	50.000
Pilling	Scale 1-5, max. 5 EN ISO 12945-2	5
Light Fastness	Scale 1-8, max. 8 EN ISO 105-B02	4-5
Flammability	BS 5852 Crib 5	Not confirmed
	BS 5852 Cigarette & match	Confirmed
Maintenance	    	
Price Grp.	Grp. 1-11, max. 11	5



Col. 39



Col. 51



Col. 79



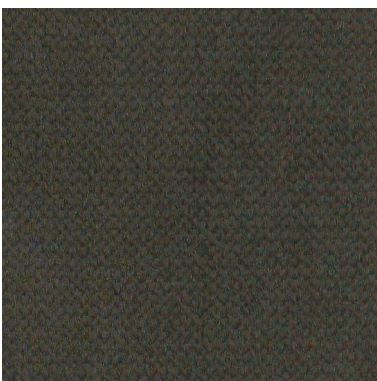
Col. 123



Col. 126



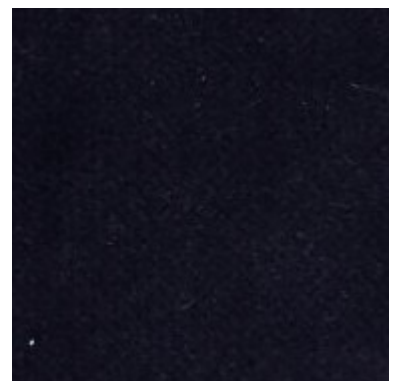
Col. 132



Col. 156



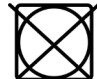




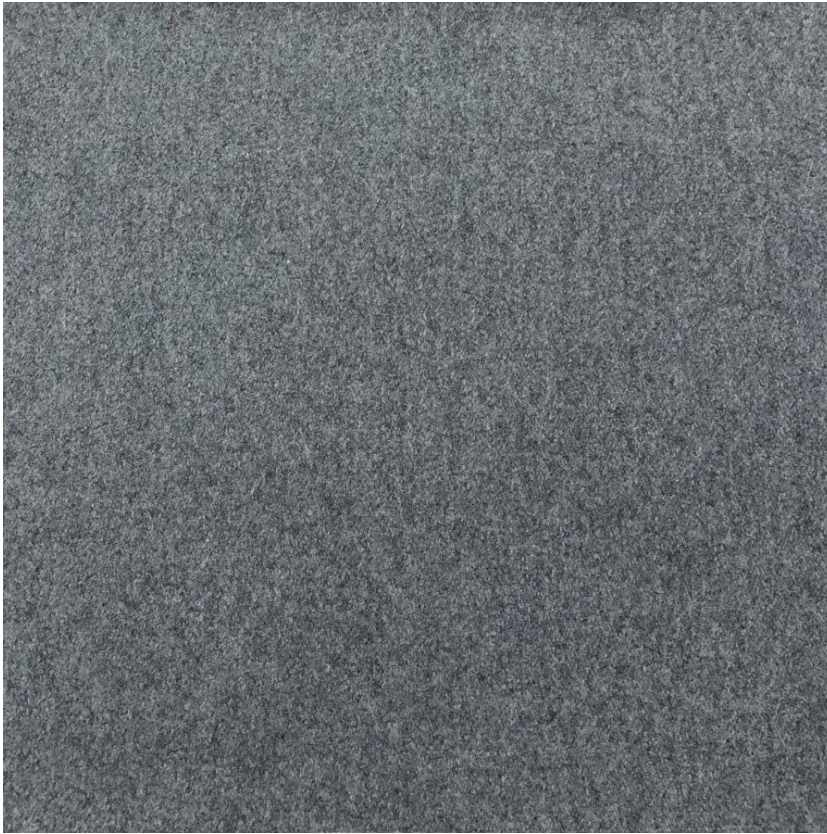
Col. 158



Col. 178

Juke

Composition		90% pes./10% co.
Width		140 cm -[55']
Martindale/Abrasion	EN 12947-2	100.000
Pilling	Scale 1-5, max. 5 EN ISO 12945-2	5
Light Fastness	Scale 1-8, max. 8 EN ISO 105-B02	4-5
Flammability	BS 5852 Crib 5	Not confirmed
	BS 5852 Cigarette & match	Cigarette confirmed
Maintenance	    	
Price Grp.	Grp. 1-11, max. 11	1



Col. 02



Col. 04



Col. 06



Col. 08



Col. 10



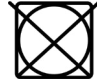




Col. 12



Col. 14

North

Composition	70% wo./20% pl./5% pa./5% pc.	
Width	140 cm -[55']	
Martindale/Abrasion	EN 12947-2	60.000
Pilling	Scale 1-5, max. 5 EN ISO 12945-2	3-5
Light Fastness	Scale 1-8, max. 8 EN ISO 105-B02	5
Flammability	BS 5852 Crib 5	Confirmed with treatment
	BS 5852 Cigarette & match	Confirmed
Maintenance	    	
Price Grp.	Grp. 1-11, max. 11	3



Col. 02



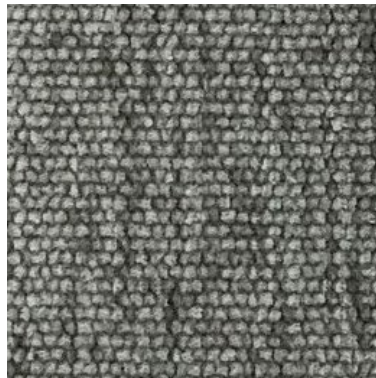
Col. 04



Col. 06



Col. 08



Col. 10



Col. 12



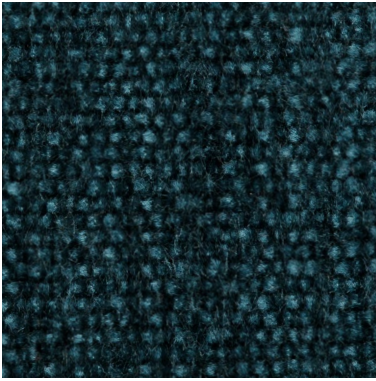
Col. 14



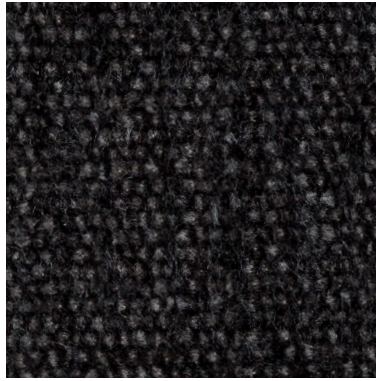
Col. 16



Col. 18



Col. 20








Col. 22



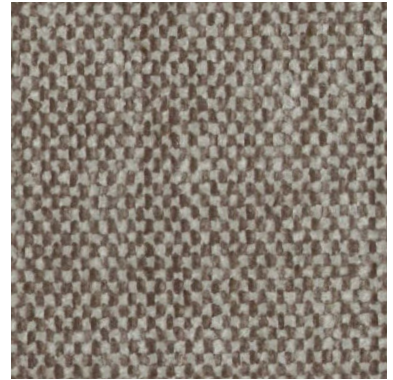
Col. 24

Roco

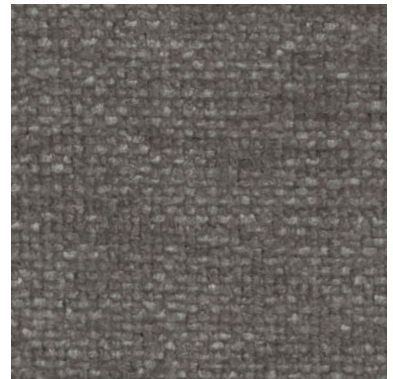
Composition	32% co./48% pc./20% pl.	
Width	140 cm -[55']	
Martindale/Abrasion	EN 12947-2	40.000
Pilling	Scale 1-5, max. 5 EN ISO 12945-2	4
Light Fastness	Scale 1-8, max. 8 EN ISO 105-B02	5
Flammability	BS 5852 Crib 5	Not confirmed
	BS 5852 Cigarette & match	Confirmed with treatment
Maintenance	    	
Price Grp.	Grp. 1-11, max. 11	3



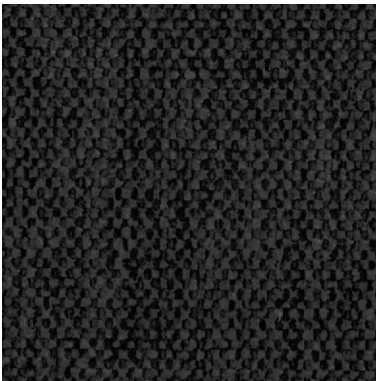
Col. 02



Col. 03



Col. 04



Col. 06



Col. 08



Col. 10



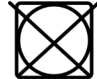




Col. 12



Col. 14

Soft

Composition	47% pol./43% ac./10% co.	
Width	140 cm -[55']	
Martindale/Abrasion	EN 12947-2	50.000
Pilling	Scale 1-5, max. 5 EN ISO 12945-2	3-4
Light Fastness	Scale 1-8, max. 8 EN ISO 105-B02	5
Flammability	BS 5852 Crib 5	Not confirmed
	BS 5852 Cigarette & match	Confirmed
Maintenance	    	
Price Grp.	Grp. 1-11, max. 11	2



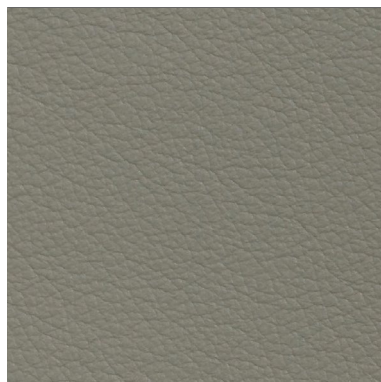
Barona Ivory



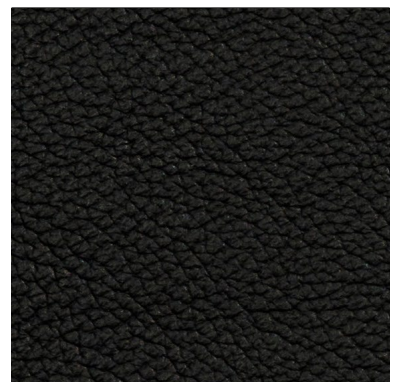
Barona Sandal Wood



Barona Sable



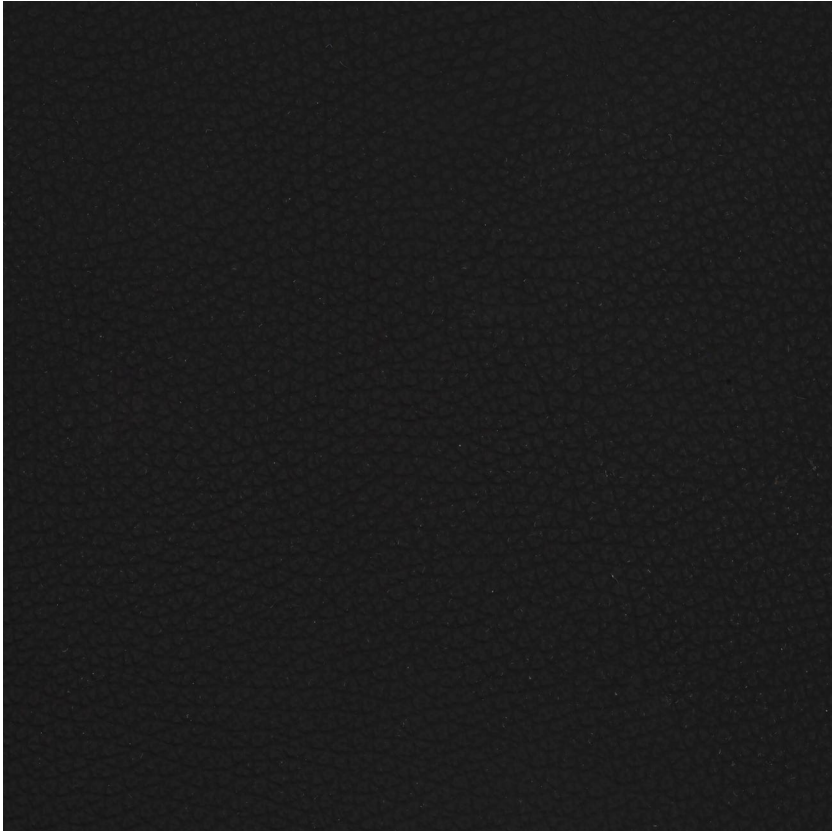
Barona Grey



Barona Black

Barona

Composition		Light Pigmented soft leather
Thickness		0,9-1,1 mm
Flammability	BS 5852 Crib 5	Confirmed
	BS 5852 Cigarette & match	Confirmed
Maintenance		Clean with damp cloth
Price Grp.	Grp. 1-11, max. 11	10



Patrol Black



Patrol Brown



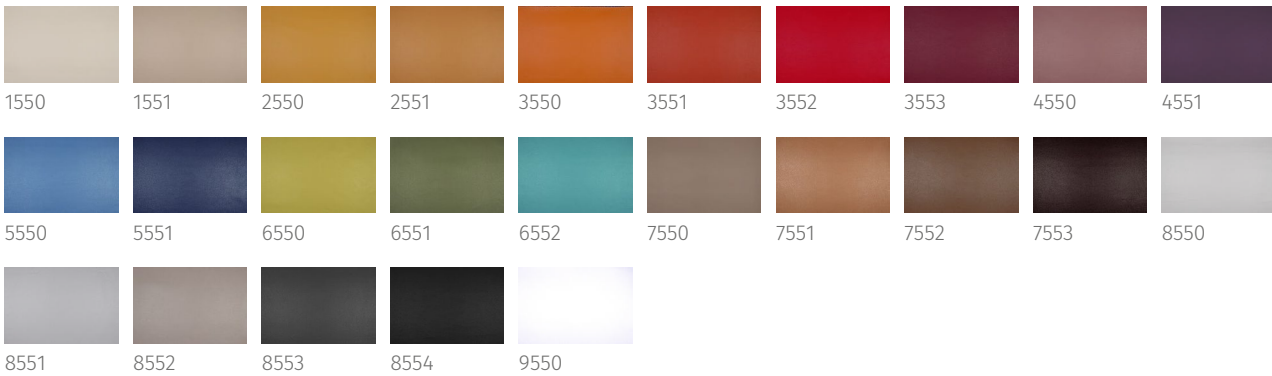
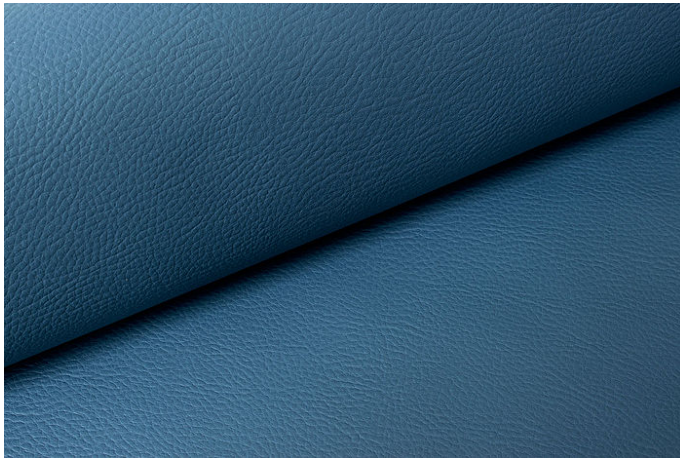
Patrol Cognac

Patrol

Composition		Semi aniline, corrected grain
Thickness		1,2-1,4 mm
Flammability	BS 5852 Crib 5	Confirmed
	BS 5852 Cigarette & match	Confirmed
Maintenance		Clean with damp cloth
Price Grp.	Grp. 1-11, max. 11	9

Solo

Article Number 36868



Width	140 cm
Weight	660 g/m ²
Repeat	no repeat
Composition	100% PU with PES/CO - coating
Flame resistance	DIN EN 1021 Teil 1, DIN EN 1021 Teil 2, BS 5852 Crib 5, IMO Res. A652 (16), Flammability performance is dependant on the foam used.
Light fastness	6-7
Rub fastness DIN EN ISO 105-X12	dry: note 5, wet: note 5
Abrasion to Martindale DIN EN ISO 12947-2 DIN EN 14465-2006	300000
Spray test - resistance to surface wetting DIN EN 24920	4
Hydrostatic pressure test DIN EN 20811	60 mbar
Care	
Other	See cleaning instructions for artificial leather products. Bright colours are not suitable for use in public areas.

Therefore, discolorations caused by soiling do not constitute grounds for complaint!

The above technical data are average values. These values only describe the technical characteristics and the chemical composition of the delivered goods. Warranties are not given.



Wendelbo A/S
Mosevej 20 A
DK - 8240 Risskov

+45 87 400 800
wmd@wendelbo.dk
www.wendelbo.com
@wendelbodk